

WinImage

Version 1.11



© 1993 Gilles Vollant

Portions © Christoph H. Hochstätter

Portions © François Liger

Portions © Microsoft™

English documentation translation with help of Joël Demay

WinImage is a disk image management utility.

What is a disk image file

Using WinImage

File Menu

Image Menu

Diskette Menu

Option Menu

WinImage future

Acknowledgements

Registering

WinImage is a shareware. You can copy, distribute it, it is available on BBS or CDROM. But if you use it, do not forget to register!

What is a disk image ?

WinImage is a disk image management utility. An image is a file which contains all the floppy data (file, FATs, boot sector, directory...).

Making an image from a floppy and writing on another, we make an exact copy (as with the Dos DiskCopy command). We can read a floppy and write the image on the hard disk. The day after, without using a floppy, we can extract a file from the image. The week after, we can write the image on 2 new disk without original, (we create 2 exact copies of it).

We can also create image with WinImage. If we want to put 5 files (which take 1.3 Mb) on a 3"1/2 HD unformatted floppy. We create an empty 1.44 Mb image, we then inject the 5 files on it from the hard disk (very fast) and in one operation, we format the floppy and write the image on it.

WinImage can format and use very large capacity no-standard disk. (3"1/2 HD 1.72 Mb and 5"1/4 HD 1.44 Mb). To use them, you must load the TSR FdRead, a shareware from Christoph H. Hochstätter's . You find it with the FdFormat utility. I think you must look at it. You don't need this TSR if you use only standard format with WinImage.

You can load an image reading a floppy, or reading an image file, or creating an empty image.

You can extract the files of an image on any device. (hard disk, network unit or... floppy).

You can also add files in image.

The image can be copied on a floppy (which must have the same format) or saved in a file.

An image file contains all the floppy sectors. If it's not full, you can truncate the file.

Winimage can read images of a lot of disk copy utility : Wimage (in FdFormat utility) from C.H. Hochstätter, DrDos 6 and OS/2 2.x diskimage utility, DCF (Disk Copy Fast) from Chang Ping Lee, DF (Disk Image File Utility) from Mark Vitt, Super-DiskCopy from Super Software, SabDu from S.A. Berman, Disk-RW from K. Hartnegg, DiskDupe (from Micro System Design), internal disk Microsoft and Lotus image utility and MFMT sample Windows NT application given with Windows NT SDK.

Using WinImage

WinImage shows files and directories in the image in the main window. You can go in a directory by double-clicking on it. To return to the parent directory, double-click on the first entry ("..").

WinImage runs with an image in memory. When there is no image, some icons and menu entries are grayed.

You can create directory, delete or add files in image, with the icons or the Image menu. You can use drag and drop, from Windows File manager to WinImage for inject or from WinImage to other application for extract.

You can extract file with 3 methods :Extract in Image menu (or his icon), launching file by double-clicking on it, and drag to another application.

WinImage allows you to drag the image file from WinImage to another application : put the mouse pointer in status bar or in the toolbar background. Press the left mouse button, put the mouse pointer to another application (drag and drop client), and release the mouse button. This original function allow you add the image in a .ZIP or .ARJ with the Nico Mak's WinZip utility, or attach the image in an e-mail created with Microsoft™ MS-Mail, or Lotus™ Notes or ccMail.

File Menu



New

Create new image

File New create a new empty image. You must choose a format (by example 1.44 Mb).



Open

Open an image file.

Close image

Close current image



Save

Save current image.

Save as

Save current image with a new name.

Exit

Quit WinImage.

Image Menu

Create directory

Create directory in current image.



Select

Select files in current image.



Inject

Inject files in current image.



Extract

Extract files from current image.

If there is no file selected, WinImage extracts all files from image, otherwise it extracts only selected files.

Depending Confirmation option, you will have to specify the extracting path. (a dialog box with some Preference fields is showed).

Delete file

Delete files on current image, after asking confirmation.

If there is no file selected, WinImage deletes all the files from the image, otherwise it deletes only selected files.

Change Label

Change the volume label of the current image.

Change size

Change the size of the current image.

The new size must be greater than all the files on the image. (You can transform 1.44 Mo image on 360 Ko only if you have less than 360 Ko of files).

Defrag current image

Defragment the current image files.

Diskette Menu



Use drive A: or B:

Use device A: for read and write floppy

On a computer with 2 floppy, with this command you choose the unit you want use for reading or writing disk.



Read disk

Read a floppy and put its image in memory.

Compare disk

Compare current image with a floppy.



Write disk

Write current image on a floppy.



Format and write disk

Format a floppy and write the current image on it.

Option Menu



Sort by Name



Sort by Type



Sort by Size



Sort by Date

These options are used for showing file of the image.

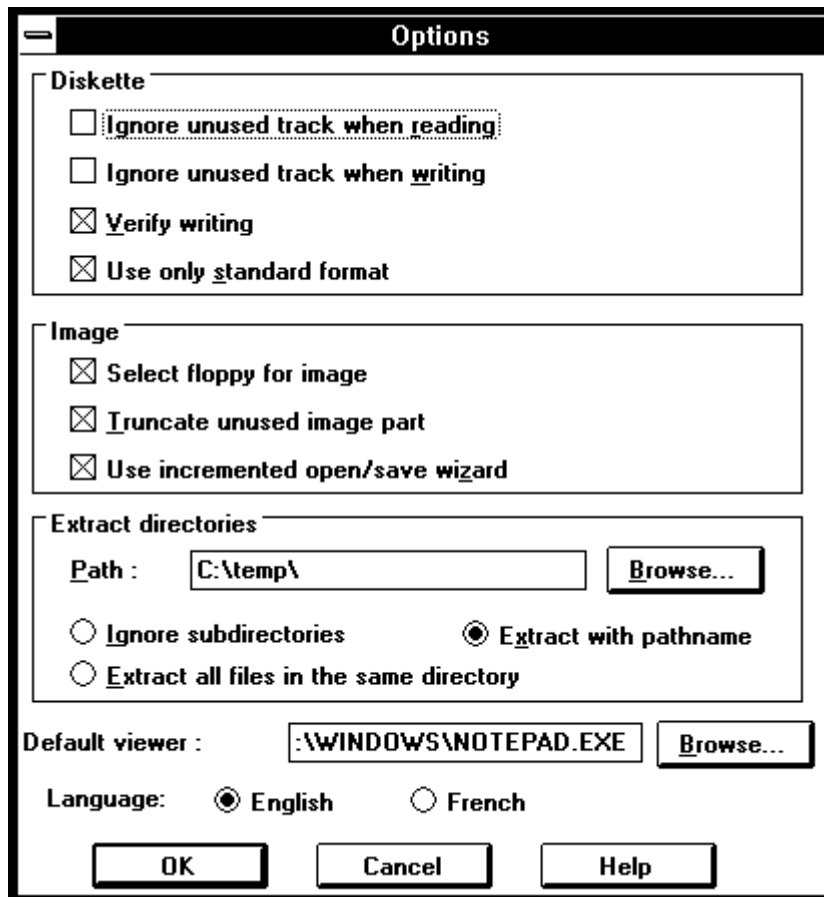
Font

Change current font (used for showing file of the image).

Preference

Set WinImage Options

You see this dialog box :



Ignore unused track when reading : if this option is checked, when reading (or compare) a floppy (which isn't full), WinImage ignores unused track.

Ignore unused track when writing : if this option is checked, when writing on floppy an image (which isn't full), WinImage ignores unused track.

Verify writing : if this option is checked, WinImage verifies writing on floppy. That takes more time, but you are sure this disk is readable.

Use only standard format : if this option is checked, WinImage create only standard floppy (which don't need FDREAD).

Select floppy for image : if this option is checked, WinImage select floppy for image in memory. (If you load a 360 Ko image, WinImage select your 5"1/2 floppy).

Truncate unused image part : if this option is checked, when writing an image file (which isn't full), WinImage reduces the size of the image.

Use incremented open/save wizard : if this option is checked, WinImage increments filename : After open (or save) "DISK01.IMA" file, WinImage proposes "DISK02.IMA" for next opening (or saving).

Path : You specify here where to extract the files form the image.

This three options are for extracting subdirectories :

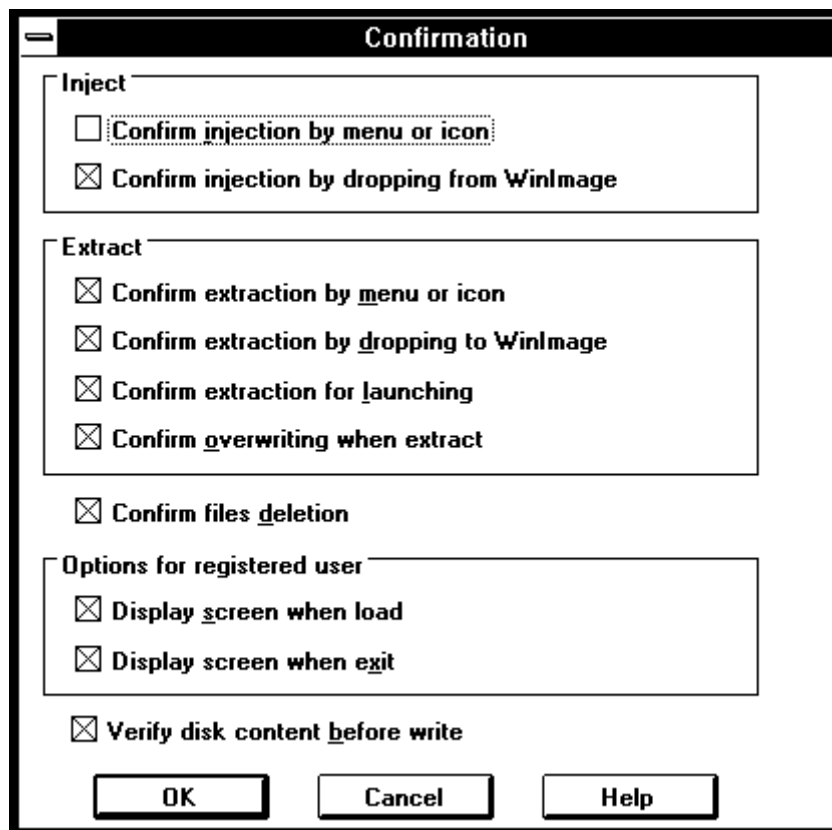
Ignore subdirectories : WinImage won't extract subdirectory selected.

Extract all in the same directorie : WinImage extracts files in a subdirectory of the image in the Path location.

Extract with pathname : WinImage extract files in a subdirectory of the image in a subdirectory of the Path location.

Default viewer : define viewer application launched when double-clicking in a file without association.

Confirmation



Inject : These 2 options allow you to enable/disable the use of a dialog box when injecting files.

Extract : The three first option control coming of a confirmation dialog box when extracting files. ?

Confirm overwriting when extract : if this option is checked, if extracting risk overwrite a file, WinImage ask confirmation.

When deletes files : this option controls coming of a confirmation dialog box when deleting files. ?

Options for registered user : see Registering.

Verify disk content before write : if this option is checked, WinImage ask confirmation before writing on a disk which contains data.

Evolution of WinImage

September 1993 : Version 1.11

Support of directory drag from Windows file manager.

September 1993 : Version 1.10

main difference :

- Windows NT version : build for the released version of NT, drag and drop server run correctly.
- Functions for delete files in image, change format and defrag.
- Drag server of image file.
- Better usability : new menu, news option and confirmation dialog boxes, "Always on top" in system menu, last 4 files in File menu, help on toolbar with with button.
- Incremented filename.
- Better support of compraing and option saving.

May 1993 : Version 1.0

There is two version of WinImage : a 32 bits version for Windows NT (WINIMANT.EXE). It can't use large capacity floppy (there is not NT version of FDREAD), but background reading or writing disk ABSOLUTELY DOES NOT slow working with another application.

I hope you will send me a feedback about WinImage. My Compuserve ID is 100144,2636 and my Internet e-mail box is 100144.2636@compuserve.com.

Acknowledgements

Building a user-friendly software needs help of a lot of people.

Dos utility FdFormat and Wimage from *Christoph H. Hochstätter* gave me some great ideas. Without the source code, I can't format large format floppy.

Building new icons and bitmap, *François Liger* gave WinImage a better look. Giving me some piece of code, he saved a lot of my time.

Correcting the french documentation, *Monique Vollant* allowed me to have a better syntax. *François Liger* & Joël Demay made the same work with english documentation.

Some ideas and test are coming from beta-tester. I thank *Fabrice Letard* and *Thierry Halin*, and particularly *Joël Demay*, *Michel Nedelec* and *Luc Coiffier*.

Patrick Rafamantanantsoa, *Bernard Maudry* and *Nico Mak* gave me some ideas for WinImage.

Registering

WinImage is a shareware. You can copy, distribute and try, it it is available on BBS or CDROM. If you use it, you must register. You will receive a licence, the lastest release and the next two release, Dos Extract and Inject tools. You will have a reigstering number, that allow you to hide the beginning and ending screen.

The licence price is again **100 french francs or 20.**

send a check to :

Gilles Vollant
13, rue François Mansart

91540 Mennecy
France

phone : (33) (1) 64 99 75 23

You can use the CompuServe's shareware registration service (GO SWREG). The WinImage registration number is 1233.

```
# HELPID_FILENEW
# HELPID_FILEOPEN
# HELPID_FILECLOSE
# HELPID_FILESAVE
# HELPID_FILESAVEAS
# HELPID_QUIT
# HELPID_MAKEREP
# HELPID_SELECTFILE
# HELPID_DELFILE
# HELPID_CHGLABEL
# HELPID_CHGSIZE
# HELPID_DEFRAG
# HELPID_FILEREADDISK
# HELPID_FILECOMPAREDISK
# HELPID_FILEWRITEDISK
# HELPID_FILEFORMATWRITEDISK
# HELPID_SORT
# HELPID_FONT
```